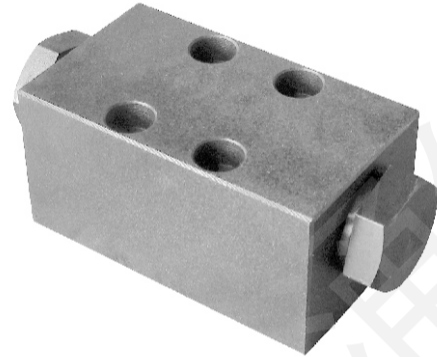
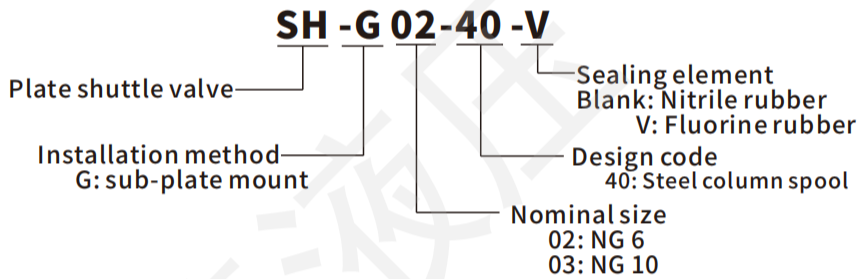


SH Series

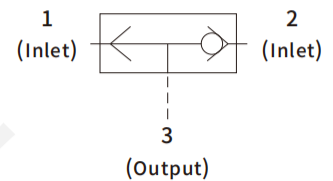
How to order



● Specification

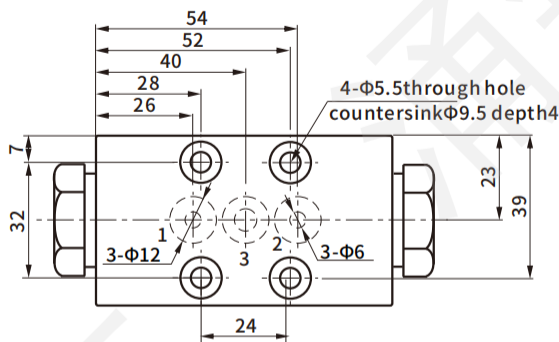
Model	Max. pressure (bar)	Max. flow (l/min)	
SH-G02	250	20	
SH-G03	320	60	
Oil	ISO VG 32,46,68	Operating temperature	-15~70°C
Viscosity range	10~400 cSt	Pollution standards	≤NAS12,25μm

● Symbol

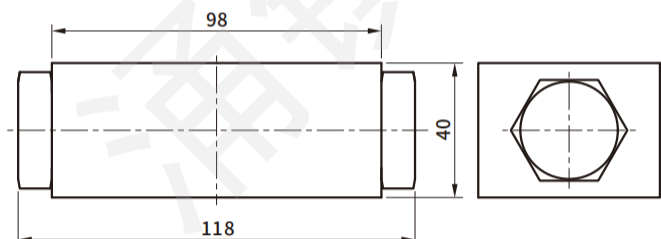
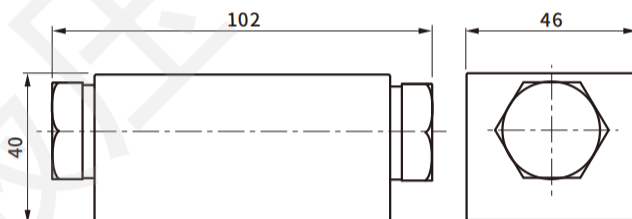
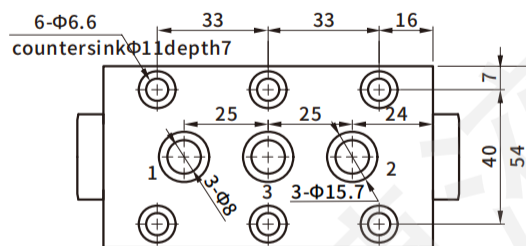


Dimensions

● SH-G02-40



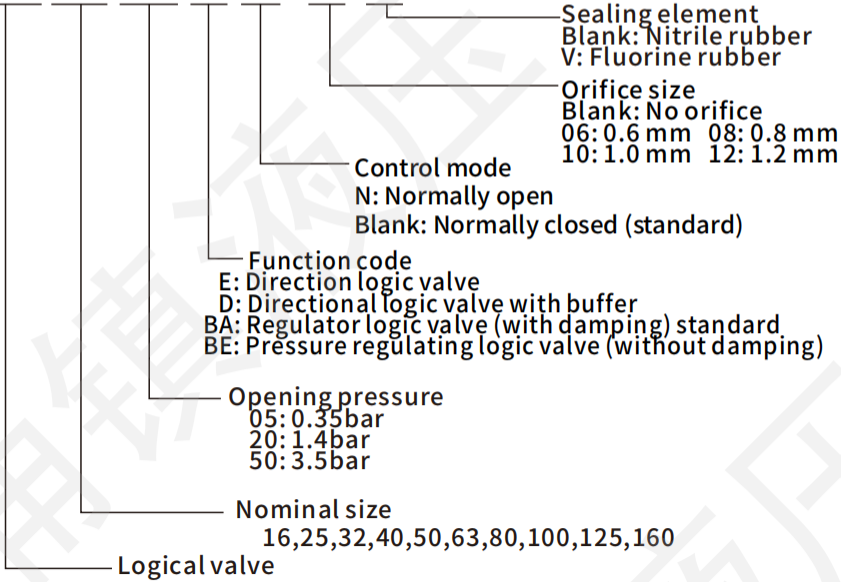
● SH-G03-40



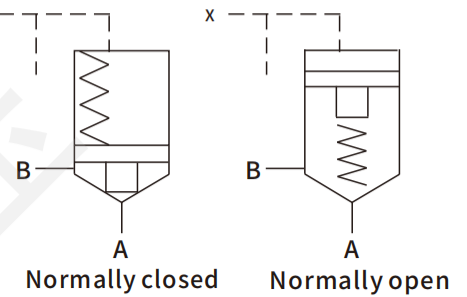
LCV Series

How to order

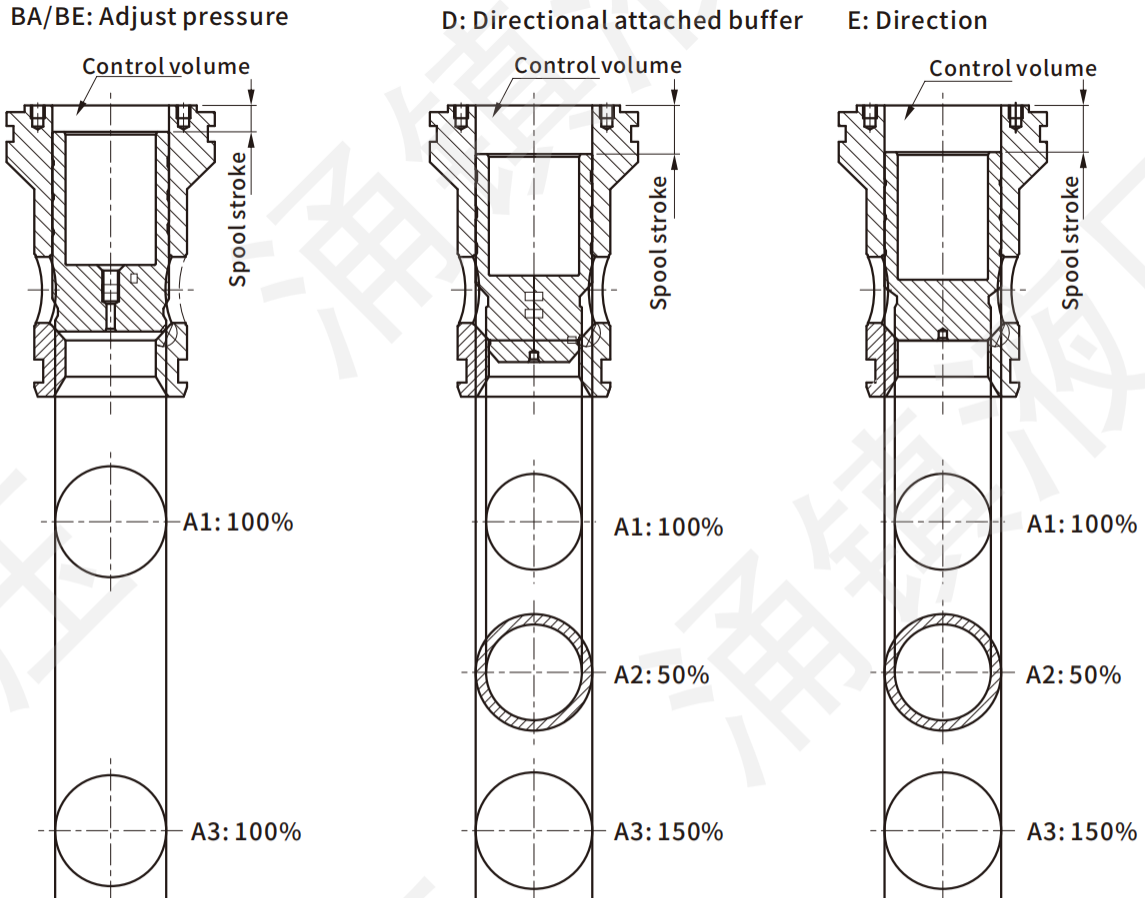
LCV -16 -05 -E -N -08 -V



● Symbols



● Valve type diagram



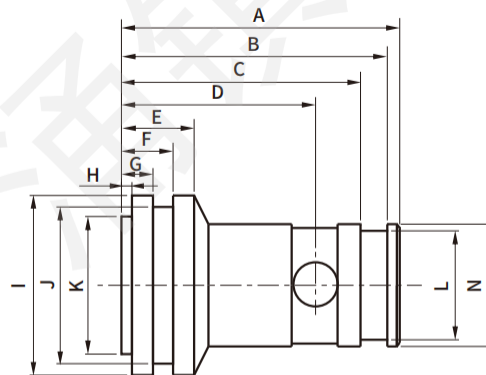
● Specification

Units: mm

		Model									
		LCV-16	LCV-25	LCV-32	LCV-40	LCV-50	LCV-63	LCV-80	LCV-100	LCV-125	LCV-160
Area A1 (cm ²)	BE/BA	2.1	4.9	8.0	12.6	24.6	32.2	52.8	95.0	143.0	240.0
	D	1.7	3.5	5.5	9.3	16.6	22.9	35.2	63.6	95.0	160.0
	E	1.5	3.6	5.3	9.4	16.6	22.9	35.2	63.6	95.0	160.0
Area A2 (cm ²)	BE/BA	0.1	0	0	1.3	0	2.0	0	0	0	0
	D	0.6	1.4	2.5	4.5	8.0	11.3	17.6	31.4	48.0	79.0
	E	0.7	1.3	2.7	4.5	8.0	11.3	17.6	31.4	48.0	79.0
Area A3 (cm ²)	BE/BA	2.3	4.9	8.0	13.9	24.6	34.2	52.8	95.0	143.0	240.0
	D	2.3	4.9	8.0	13.9	24.6	34.2	52.8	95.0	143.0	240.0
	E	2.3	4.9	8.0	13.9	24.6	34.2	52.8	95.0	143.0	240.0
Area ratio	BE/BA	A1/A3=1:1									
	D	A1/A2=2:1									
	E	A1/A2=2:1									
Stroke (cm)	BE/BA	1.0	0.7	1.0	1.0	1.6	2.2	2.8	3.8	4.3	6.3
	D	1.3	1.0	1.6	1.8	2.2	2.4	3.3	3.9	4.8	6.5
	E	1.3	1.0	1.7	1.7	2.2	1.9	2.7	3.0	3.8	5.5
Control volume (cm ³)	BE/BA	2.3	3.5	8.0	13.2	39.2	73.6	147.8	361.1	615.5	1515.2
	D	3.0	5.1	13.0	24.2	53.0	82.1	174.2	370.6	687	1563
	E	2.9	5.1	13.7	23.3	53.0	66.4	137.9	385.1	544	1203
Max. pressure (bar)		315									
$\Delta P=10\text{bar}$, Max.flow(l/min)	D	230	480	800	1400	1850	2500	4000	6400	10800	16200
	E	260	640	960	1800	2200	3000	5000	8800	14400	22500
Operating temperature(°C)		-15~70									
Opening pressure(bar)		05: 0.35bar 20: 1.4bar 50: 3.5bar									
Viscosity range(cSt)		10~400									
Pollution standards		≤NAS12 25μm									
Oil		ISO VG32 46 68									

Cartridge Valve

Dimensions

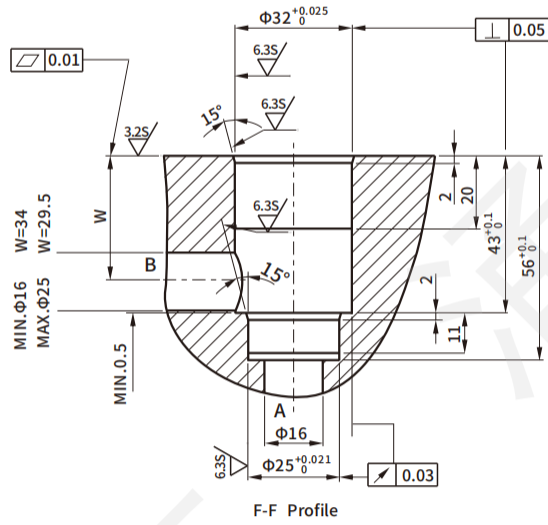
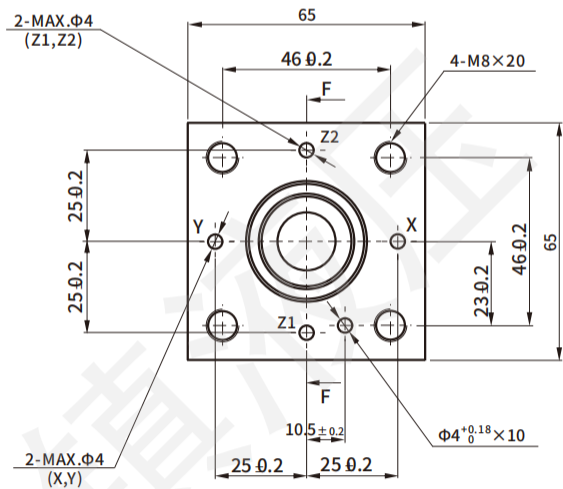


Model	A	B	C	D	E	F	G	H	I	J	K	L	N
LCV-16-**	56	52	46.5	37	16	10.5	7	2.4	32	29.2	23.7	22.2	25
LCV-25-**	72	69	62.6	43	16	13.5	8.8	1.8	45	40.8	37	29.8	34
LCV-32-**	85	81	74.6	58	20	13.6	8	2.4	60	55	47.5	40.8	45
LCV-40-**	105	97	90.6	66.5	24	15.6	10	2.4	75	70	62	50.8	55
LCV-50-**	122	114	107.6	83	20	14.6	9	2.4	90	85	76.8	63.8	68
LCV-63-**	155	145.5	134	115	27	21	12	4.6	120	110	94	80	90
LCV-80-**	205	195	183.5	152	30	21	12	4.6	145	135	120	100	110
LCV-100-**	245	231.5	220	180	35	28	15	6.9	180	165	150	125	135
LCV-125-**	300	281.5	268.5	212.5	32	26	13	7	225	210.8	190	188.4	200
LCV-160-**	425	391.9	376.3	298	65	40.3	24.7	—	300	285	—	255	270

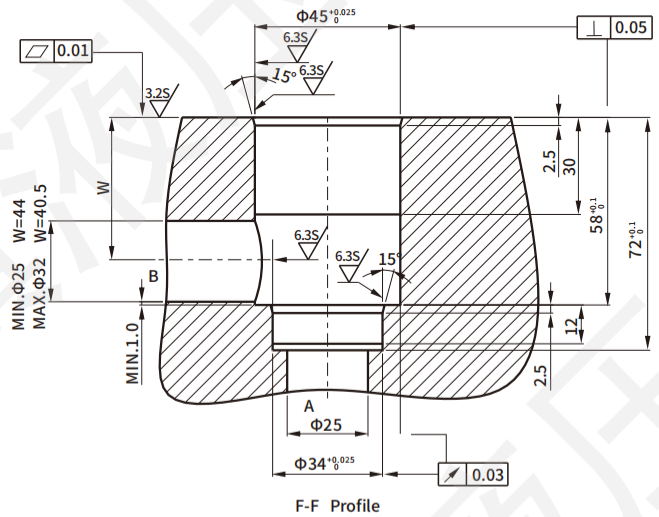
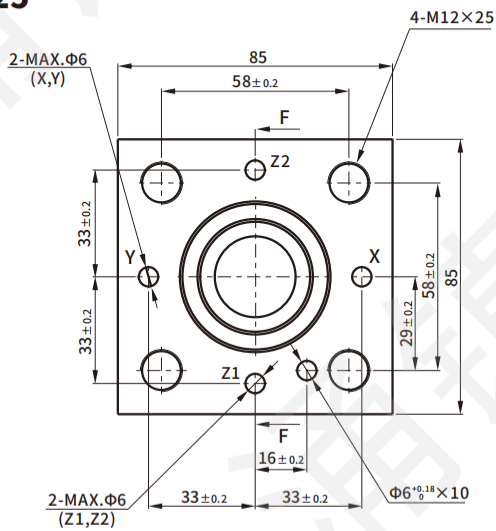
● ISO 7368 Cavity size

Units : mm

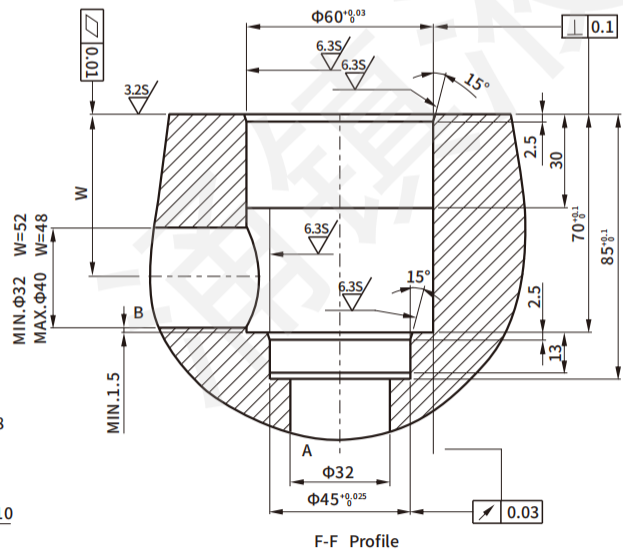
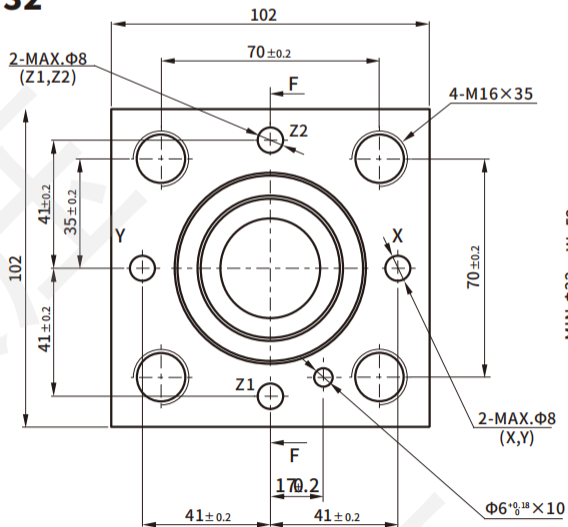
NG16



NG25



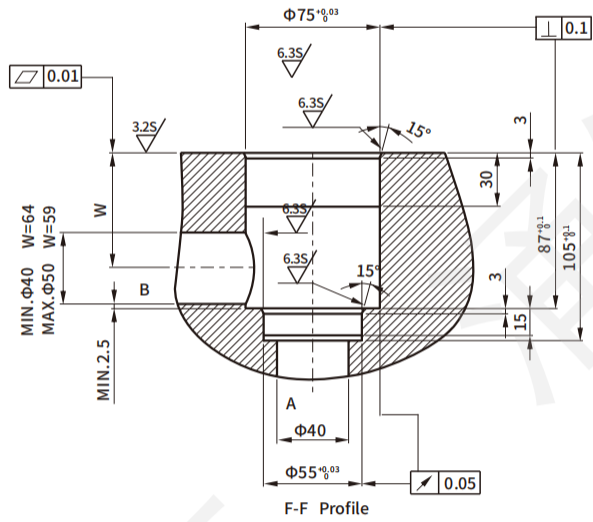
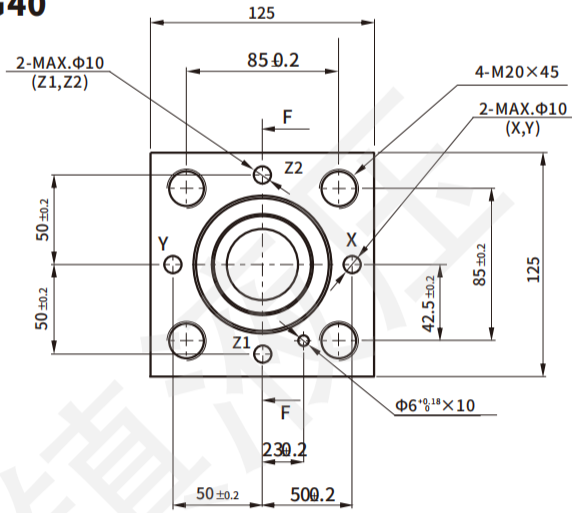
NG32



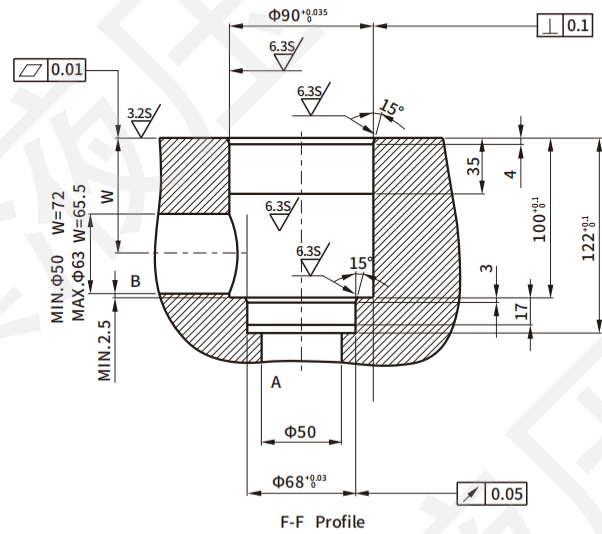
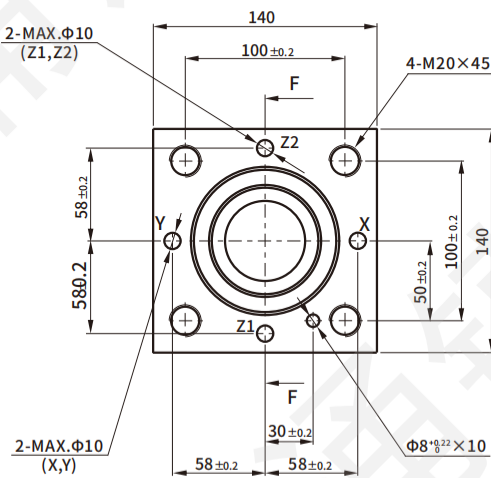
Cartridge
 valve

Units: mm

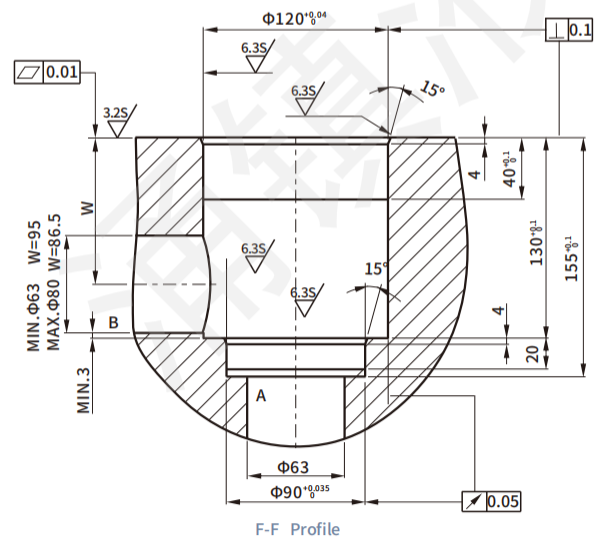
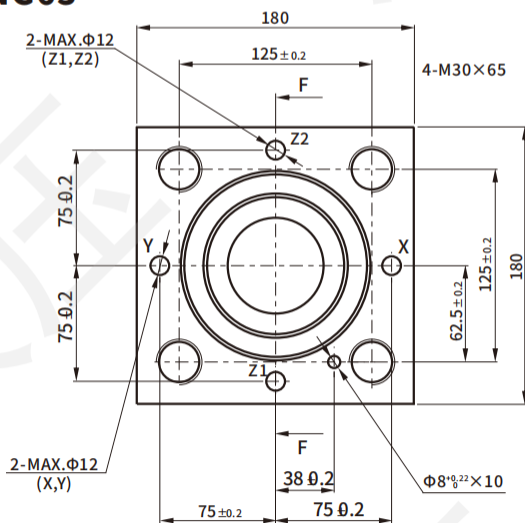
NG40



NG50

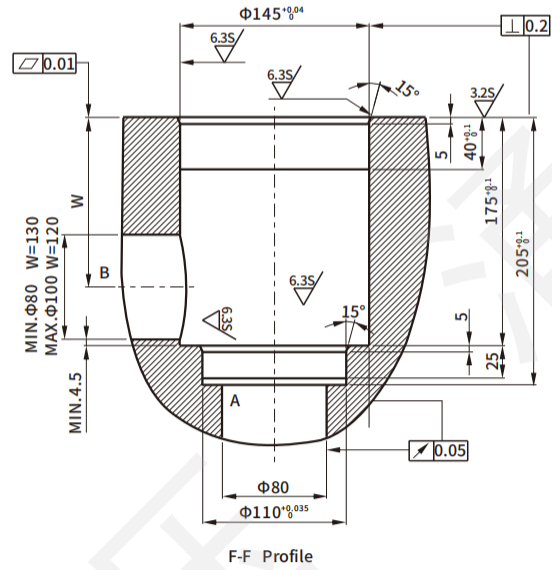
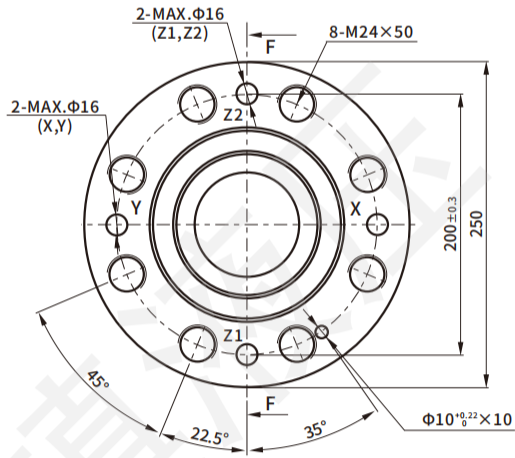


NG63

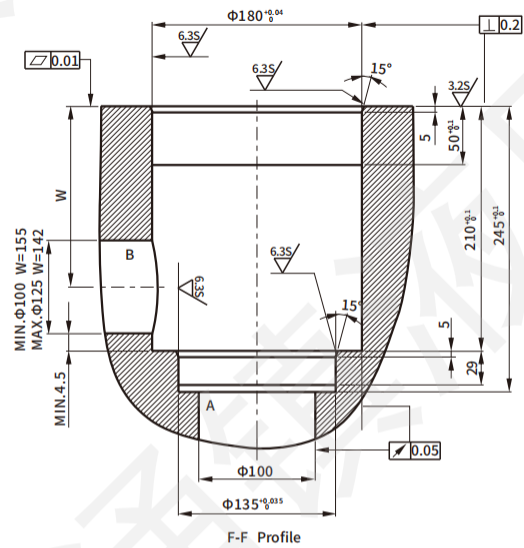
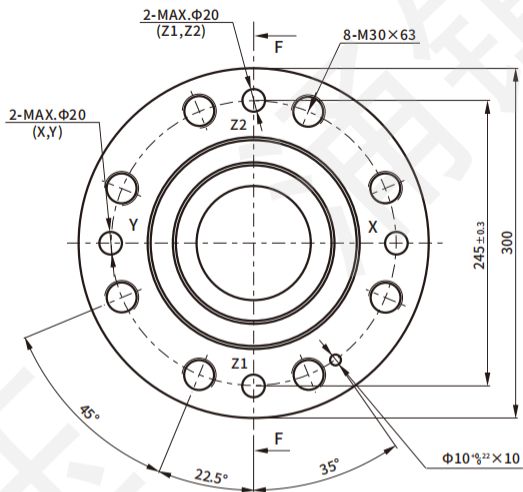


Units: mm

NG80



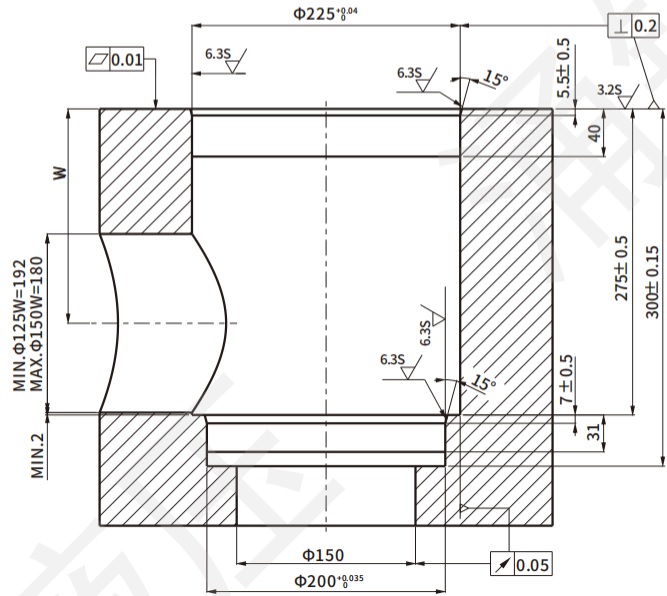
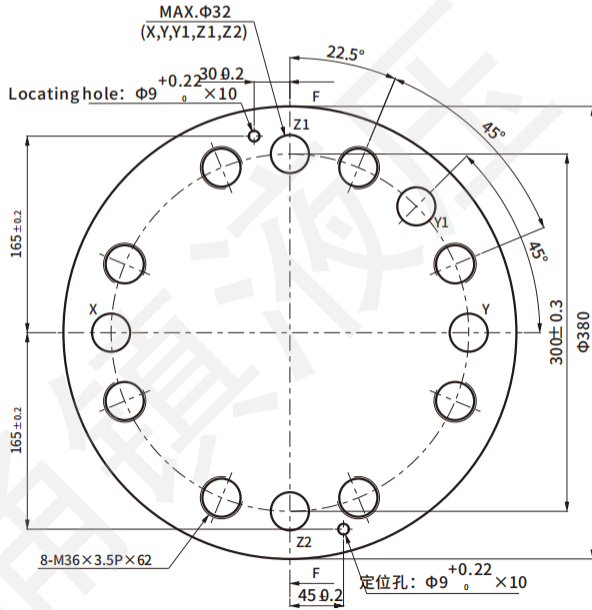
NG100



Cartridge valve

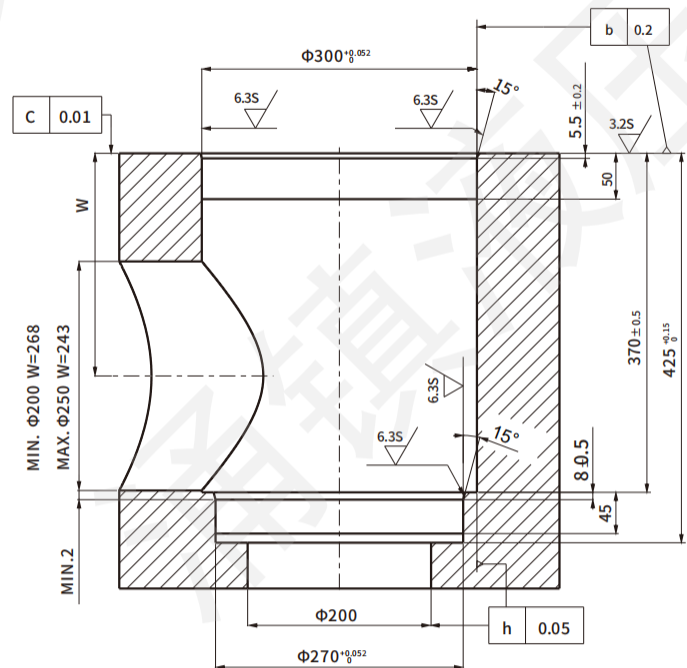
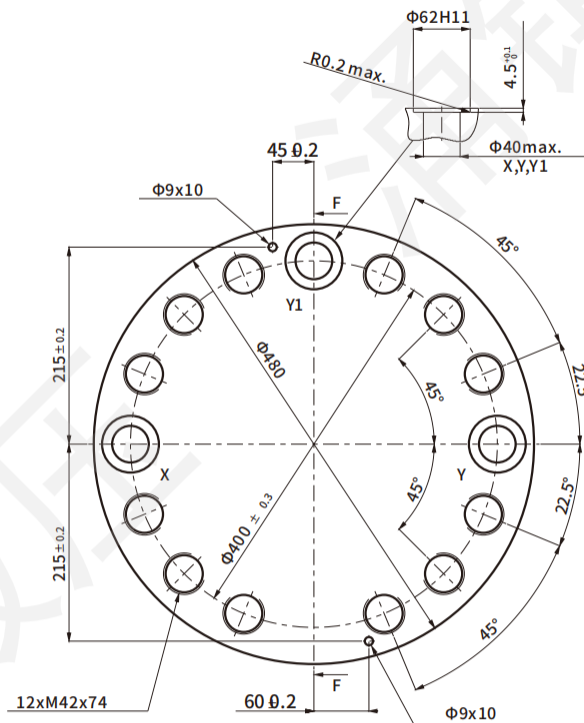
Units : mm

NG 125



F-F Profile

NG 160



F-F Profile

LCV-ZB Active logic valve

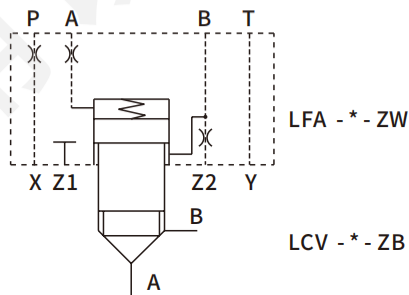
How to order

LCV - 16 - 30 - ZB - V

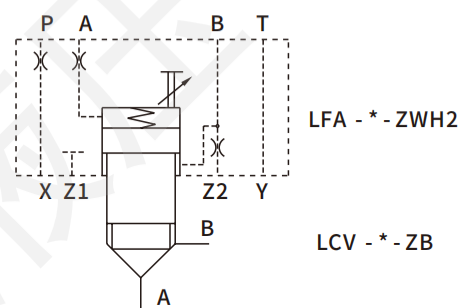
- Sealing element
Blank: Nitrile rubber
V: Fluorine rubber
- Valve type
ZB: Active pressure spool
- Opening pressure
30: 2bar
- Nominal size
16,25,32,40,50,63
- Logic valve



● Symbols

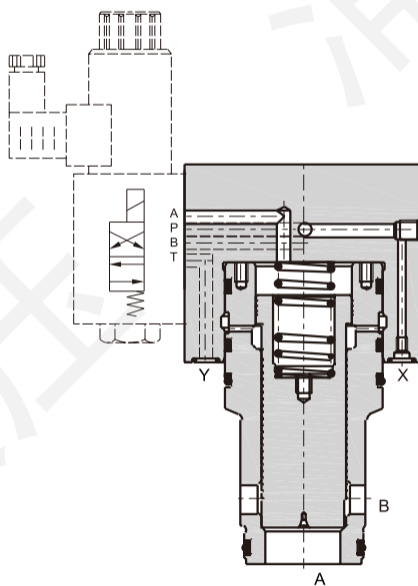


Dynamic valve without "stroke regulator"

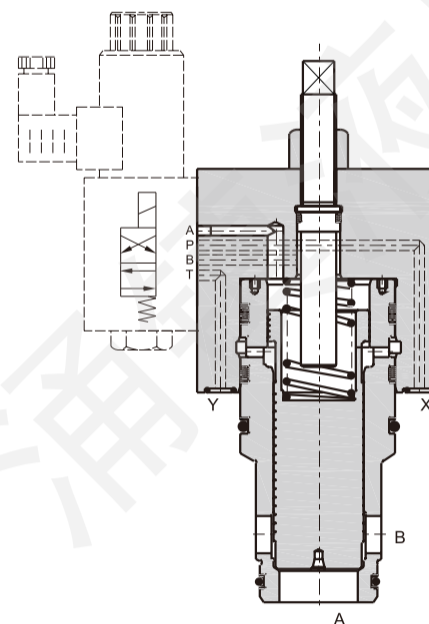


Dynamic valve with "stroke regulator"

● Valve diagram

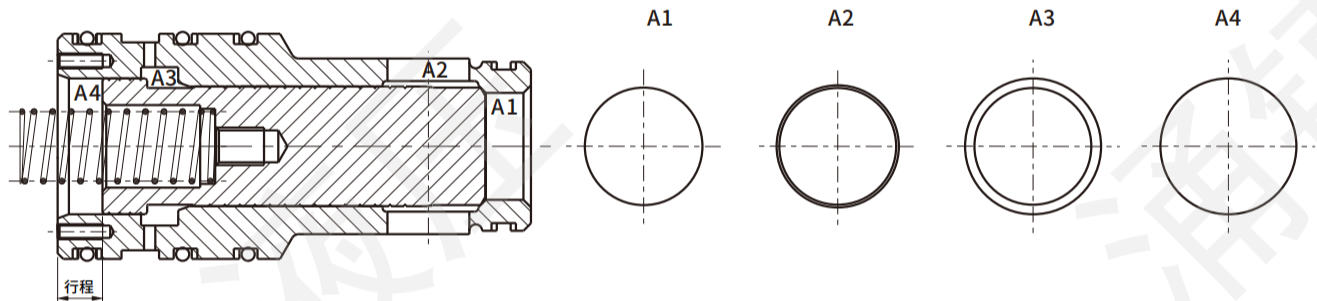


Dynamic valve without "stroke regulator"



Dynamic valve with "stroke regulator"

● Valve diagram



Spool related parameters:

Units: cm²/cm

Size	A1(cm ²)	A2(cm ²)	A1+A2(cm ²)	A3(cm ²)	A4(cm ²)	Stroke(cm)	A1:A2
16	2.03	0.10	2.13	0.81	2.95	0.8	20:1
25	4.67	0.23	4.90	1.38	6.29	0.9	
32	7.64	0.39	8.04	2.30	10.34	1.1	
40	12.56	0.63	13.20	3.77	16.98	1.45	
50	20.26	0.96	21.23	6.10	27.33	1.9	
63	32.57	1.63	34.21	9.73	43.94	2.5	

Cartridge Valve

Description

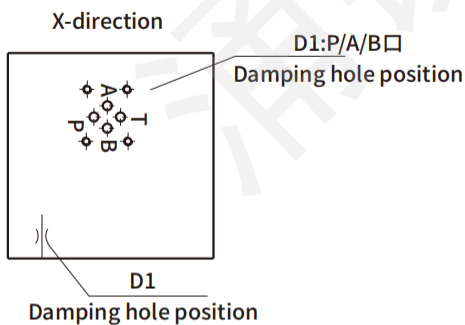
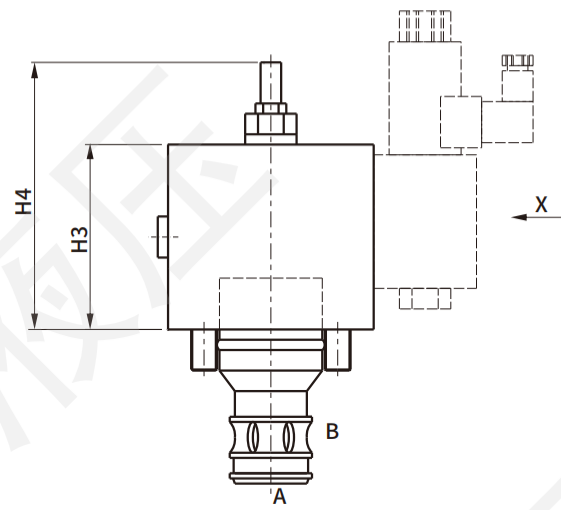
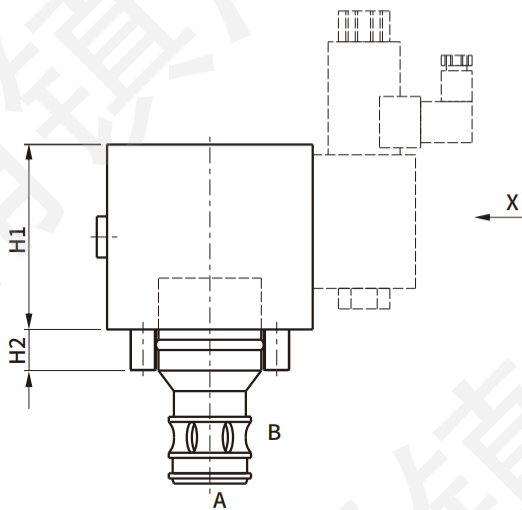
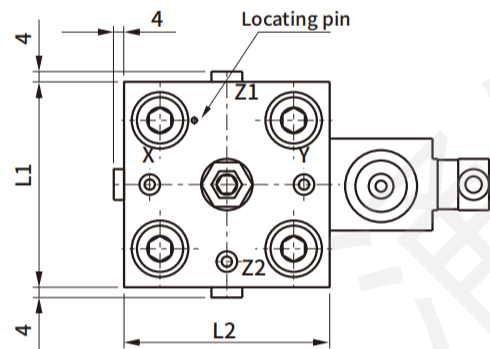
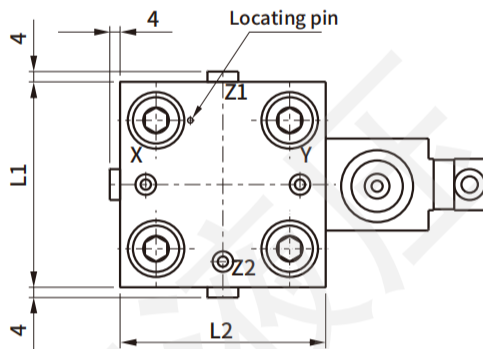
Two-way cartridge active controlled valve (hereinafter referred to as "dynamic valve"), the spool is controlled by the hydraulic bidirectional, the medium is controlled by the pressure oil of the A3 and A4 chambers, to achieve stable operation and faster response efficiency.

LFA-*-ZW cover plate provides functional options:

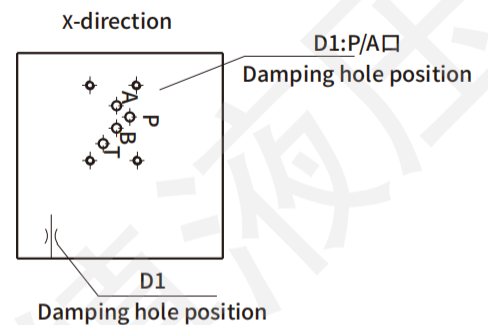
- 1: No pilot control solenoid valve
- 2: with pilot control solenoid valve
- 3: Equipped with a position sensor to provide an open/closed state of the spool signal.
(This function is not recommended to order separately)

The LCV-ZB active spool can be installed directly into the ISO7368 cavity hole and is suitable for replacing the "passive valve" loop to complete the position monitoring and improve the operating requirements of the actuating response.

Dimensions



This installation surface is used for 16/25/32/40/50 size.



This installation surface is used for 63 size.

Size	16	25	32	40	50	63
D1	M5	M6	M6	M6	M6	M10
H1	85	90	95	110	120	150
H2	14	18	25	31.5	31.5	45
H3	95	100	105	120	130	165
H4	132	133	131	139.5	160.5	225
L1	65	85	102	125	140	180
L2	65	85	102	125	140	180

Characteristic curve

